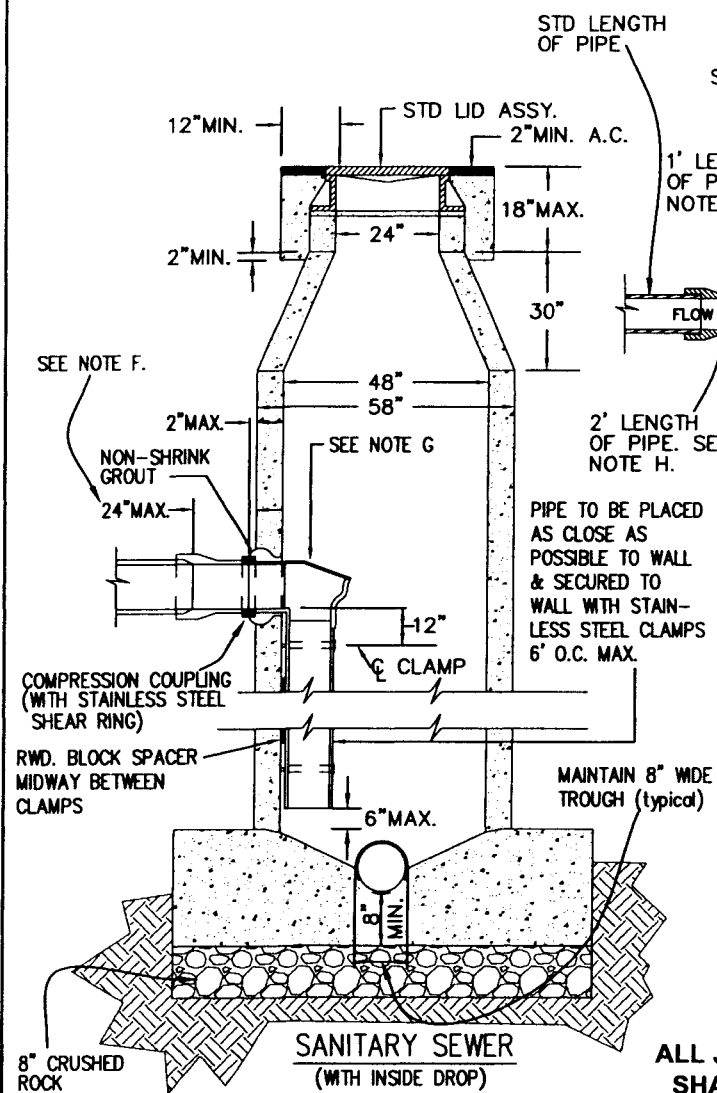
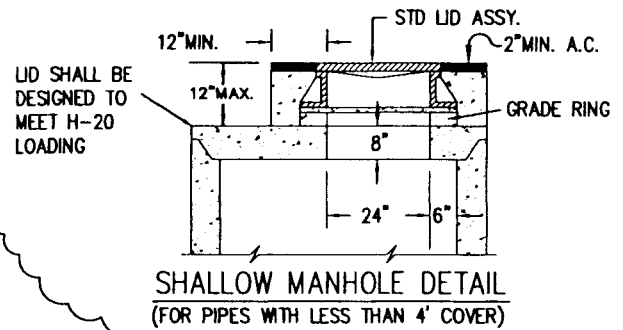
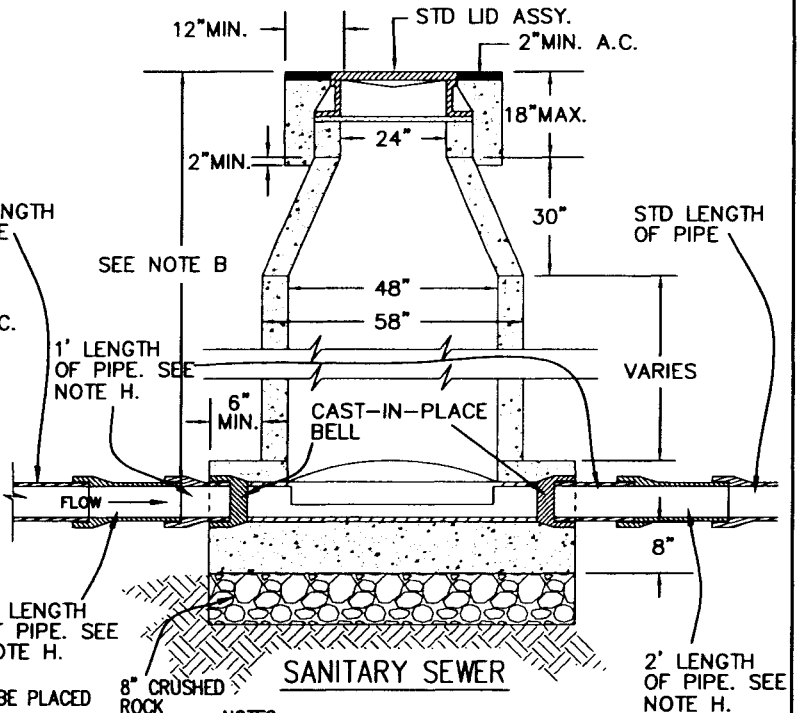


**CHANNELIZATION FOR  
SANITARY SEWER MANHOLES**



**SANITARY SEWER MANHOLE**  
(FOR PIPES LESS THAN 30"Ø)



**NOTES:**

- A. PRIOR TO BACKFILLING, THE CONTRACTOR SHALL VACUUM TEST ALL MANHOLES TO ENSURE NO LEAKAGE WILL OCCUR. SEE REQUIREMENTS IN CITY SPECIAL PROVISIONS.
- B. FOR PIPES WITH LESS THAN 4' COVER USE THE SHALLOW MANHOLE DETAIL.
- C. INSIDE DROP REQ'D IF INVERT OF PIPE IS 4' OR MORE ABOVE FLOWLINE.
- D. THE CITY MAY REQUIRE THE CONTRACTOR TO HYDROFLUSH THE SEWER LINES IF ANY CONSTRUCTION DEBRIS IS FOUND IN THE LINES.
- E. SEE CITY DETAIL TR5 FOR BEDDING & BACKFILL REQUIREMENTS.
- F. USE PVC OR ABS AT INSIDE DROP AND FOR EXTENSION (24" max) COMING OUT OF MANHOLE. CONNECT TO CITY SPECIFIED MATERIAL AT SEWER LATERAL.
- G. USE RELINER/DURAN, INC (OR CITY APPROVED EQUAL) DROP BOWL. INSTALL PER MANUFACTURER'S SPECIFICATIONS.
- H. USE FACTORY PRODUCED PIPE.

**ALL JOINTS & PICK POINTS  
SHALL BE SEALED WITH  
RAM-NEK OR A SIMILAR  
PRODUCT APPROVED BY THE  
CITY.**

DATE	REVISIONS	BY

<b>CITY OF YUBA CITY</b>
<b>STANDARD DETAIL</b>
<b>SS1</b>
<i>[Signature]</i> 7/21/09
APPROVED DATE